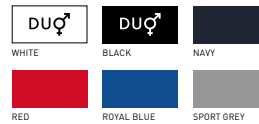


# B&C Athletic Move - TM 200



## MEDIUM FIT

- Athletic vest
- Deep round neck with piping in self fabric
- Piping in self fabric at armholes
- Bottom hem with double topstitching
- Tubular construction



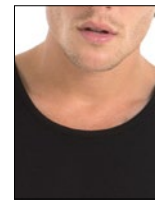
100% pre-shrunk ring-spun cotton  
SPORT GREY: 85% PRE-SHRUNK RING-SPUN COTTON - 15% VISCOSE

Single Jersey

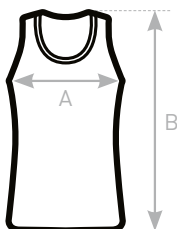
145 g/m<sup>2</sup>

M - L - XL - XXL

10 pcs/pack & 100 pcs/carton



**DUO**  
**CONCEPT**  
with B&C Women-Only  
Tattoo



### SIZES [CM]

B&C ATHLETIC MOVE TM 200	XS	S	M	L	XL	XXL	XXXL
A HALF CHEST	-	-	49	52	55	58	-
B BODY LENGTH	-	-	67	70	73	77	-

