

# B&C Heritage SSL /women - SW P44

THE SHIRT CULTURE  
BE INSPIRED



## ADJUSTED FIT

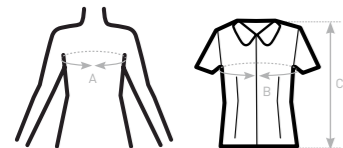
- Fine 100% cotton poplin with **Easy Care** finish
- Soft feminine collar
- Cross stitched mother-of-pearl effect buttons
- Folded hem sleeves
- Darts at bustline & back panel for a feminine shape
- Horizontal last buttonhole
- Curved bottom hem



- 100% **combed** cotton
- Poplin
- 120 g/m<sup>2</sup> (white) - 125 g/m<sup>2</sup> (colour)
- XS > 4XL
- 1 pc/pack & 10 pcs/carton



**DUO CONCEPT**  
with B&C Heritage SSL /men



### SIZES [CM]

B&C HERITAGE SSL /W. SW P44		US	XS	S	M	L	XL	XXL	XXXL	4XL	5XL	6XL
A DRESS SIZE		FR 36	38	40	42	44	46	48	50	-	-	-
		IT 40	42	44	46	48	50	52	54	-	-	-
		EU 34	36	38	40	42	44	46	48	-	-	-
		UK 8	10	12	14	16	18	20	22	-	-	-
B CHEST SIZE	CM	91	96	101	106	111	116	121	126	-	-	-
C CENTER BACK LENGTH	CM	65	66	67	68	69	70	71	72	-	-	-



THE SHIRT CULTURE  
BE INSPIRED

## PURE COTTON WOMEN'S SHORT SLEEVED EASY CARE COMFORTABLE POPLIN SHIRT

