

# B&C Black Tie LSL /men - SM P21

**B&C**  
COLLECTION  
THE SHIRT CULTURE  
BE INSPIRED



## MEDIUM FIT

- Stretch poplin
- 2-button cut-away collar
- Cross stitched mother-of-pearl effect buttons
- 2-button adjustable cuffs
  - a. Angular cuffs & square-shaped gauntlets
  - b. Additional cufflink buttonholes
- Short modern back yoke
- Inside lap seams for perfect finish
- Horizontal last buttonhole
- Square-shaped bottom hem side reinforcement
- Shorter length – can be worn untucked
- Curved bottom hem
- Darts at back panel

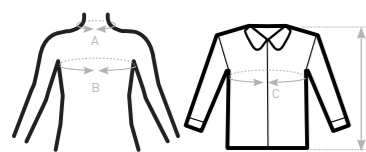


- 97% **combed** cotton - 3% elastane
- Poplin
- 135 g/m<sup>2</sup> **STRETCH**
- S > 4XL
- 1 pc/pack & 10 pcs/carton



**DUO**  
**CONCEPT**  
with B&C Black Tie LSL /women

### SIZES [CM]



B&C BLACK TIE LSL /M. SM P21	US	S	M	L	XL	XXL	XXXL	4XL	5XL	6XL
A COLLAR TO FIT	CM 37/38	39/40	41/42	43/44	45/46	47/48	49/50	-	-	-
	INS 14,5 / 15	15,5	16/16,5	17/17,5	18	18,5/19	19,5	-	-	-
B CHEST TO FIT	CM 92/97	97/102	102/107	107/112	112/117	117/122	122/127	-	-	-
	INS 36/38	38/40	40/42	42/44	44/46	46/48	48/50	-	-	-
C CHEST SIZE	CM 108	113	123	133	138	148	153	-	-	-
D CENTER BACK LENGTH	CM 73	74	76	78	79	81	82	-	-	-



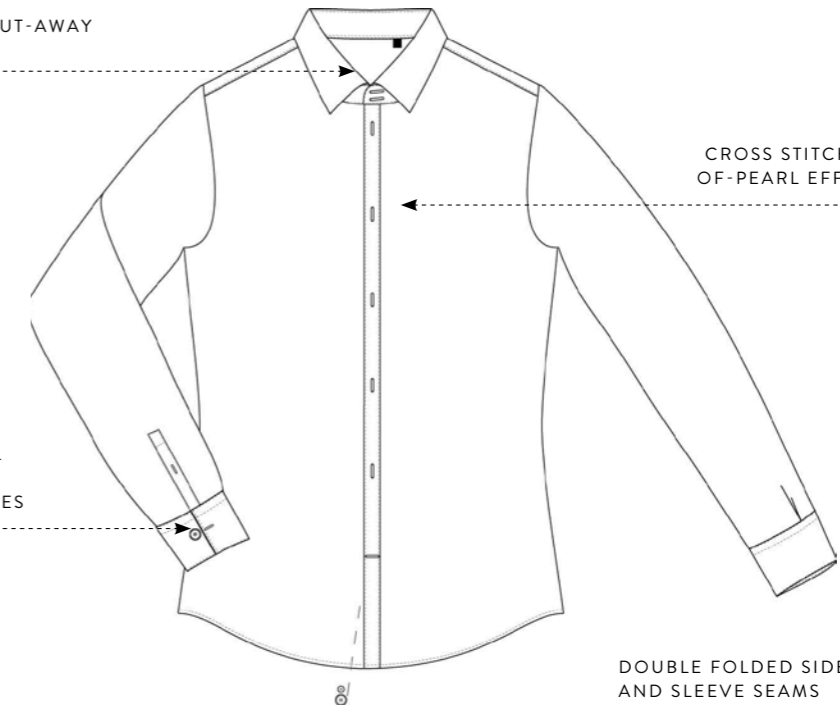
**B&C**  
COLLECTION  
THE SHIRT CULTURE  
BE INSPIRED

## STRETCH MEN'S LONG SLEEVED EASY CARE POPLIN SHIRT

2-BUTTON CUT-AWAY COLLAR

CROSS STITCHED MOTHER-OF-PEARL EFFECT BUTTONS

ANGULAR 2-BUTTON ADJUSTABLE CUFF WITH ADDITIONAL CUFFLINK BUTTONHOLES



DOUBLE FOLDED SIDE AND SLEEVE SEAMS

DARTS AT BACK PANEL

CURVED BOTTOM HEM WITH SQUARE-SHAPED SIDE REINFORCEMENT

