

# B&C Oxford SSL /men - SM 002

**B&C**  
COLLECTION  
THE SHIRT CULTURE  
BE INSPIRED

**B&C**  
COLLECTION  
THE SHIRT CULTURE  
BE INSPIRED



## REGULAR FIT

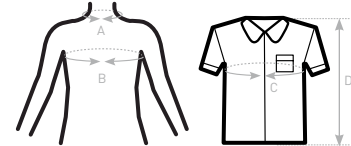
- Cotton rich polycotton Oxford fabric with **Easy Care** finish
- Soft button-down collar
- Cross stitched mother-of-pearl effect buttons (except Oxford Blue: mother-of-pearl effect white buttons)
- Short sleeves with narrow cuffs
- The exclusive B&C Tie-Fix®
- Back yoke with 2 overstitched side pleats
- Left chest pocket
- Inside lap seams for perfect finishing
- Horizontal last buttonhole
- Mitre-shaped bottom hem side reinforcement
- Curved bottom hem



- 70% **combed** cotton - 30% polyester
- Oxford
- 135 g/m<sup>2</sup> = **EASY CARE**
- S > 6XL
- 1 pc/pack & 10 pcs/carton



**DUO**  
CONCEPT  
with B&C Oxford SSL /women



### SIZES [CM]

B&C OXFORD SSL /M. SM 002	US	S	M	L	XL	XXL	XXXL	4XL	5XL	6XL
A COLLAR TO FIT	CM 37/38	39/40	41/42	43/44	45/46	47/48	49/50	51	52	
	INS 14,5 / 15	15,5	16,5	17,5	18	19	19,5	20	21	
B CHEST TO FIT	CM 92/97	97/102	102/107	107/112	112/117	117/122	122/127	127/132	132/137	
	INS 36/38	38/40	40/42	42/44	44/46	46/48	48/50	50/52	52/54	
C CHEST SIZE	CM 111	116	126	136	141	151	156	161	171	
D CENTER BACK LENGTH	CM 80	81	83	85	86	88	89	90	92	



CONFIDENCE  
IN TEXTILES  
Tested for harmful substances  
according to Oeko-Tex® Standard 100  
ISO 9003  
Centarbel

## MEN'S SHORT SLEEVED EASY CARE OXFORD SHIRT

