

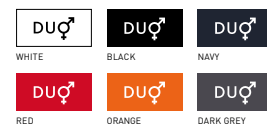
B&C ID.601 /WOMEN > JW 161

LIGHT WEIGHT JACKET / WITH LINING



Modern lined windbreaker

- 100% 210T polyester taffeta with acrylic coating (AC)
- Body lining: 100% polyester tricot
Sleeves lining: 100% polyester taffeta
- XS - S - M - L - XL - XXL
- 5 pcs/pack & 30 pcs/carton



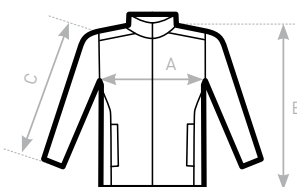
- Windproof
- Thermo-insulated
- Showerproof
- Feminine cut
- Water-repellent

- 1- Ergonomic hood concealed in collar with velcro closing tabs
- 2- Self fabric lining inside the collar
- 3- Forward seams on shoulders for better protection
- 4- Front zip opening with zip pull
- 5- Adjustable bottom hem with drawcord
- 6- 2 front pockets with overlap



DU[♂]
CONCEPT

with B&C ID.601



SIZES [CM]

B&C ID. 601 /WOMEN JW 161	XS	S	M	L	XL	XXL
A HALF CHEST	46	49	52	55	58	61
B BODY LENGTH AT CB	63	65	67	69	71	73
C SLEEVE LENGTH	65	66,5	67,5	69	70	71,5

B&C
COLLECTION
**OUTER
WEAR
/UNIT**