

# B&C CREW BOMBER /WOMEN - JW 962

## MIDDLE WEIGHT JACKET



**Middle weight bomber jacket with comfortable padding and concealed hood**

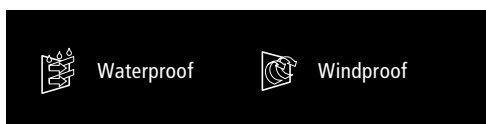
**POLYESTER PONGEE**

Outer layer: 100% polyester pongee

Inner layer: 100% polyester quilted taffeta

XS - S - M - L - XL - XXL

1 pc/pack & 10 pcs/carton

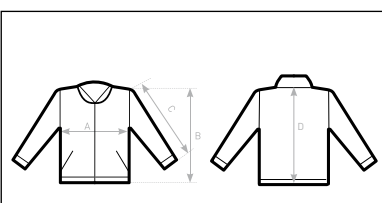


- 1- Contemporary cotton feel heavy rib on cuffs and bottom hem
- 2- Standing collar and full length internal stormflap ensure wind protection
- 3- Forward shoulder seams for better comfort and water protection
- 4- Tone-on-tone, high quality SBS zippers
- 5- 2 zipped hand pockets with overlap
- 6- 1 inner wallet pocket with velcro closing tabs

Easy access for decoration thanks to the zip opening at the bottom of the lining  
Fabric tested for the following decoration techniques - screen printing, heat transfer, and embroidery



**DUO CONCEPT**  
with B&C Crew Bomber /men



**SIZES [CM]**

B&C CREW BOMBER /WOMEN JW962	XS	S	M	L	XL	XXL
A HALF CHEST	48	51	54	57	60	63
B BODY LENGTH FROM NECK POINT	60	62	64	66	68	70
C SLEEVE LENGTH	62	63,5	65	66,5	68	69,5
D CENTER BACK LENGTH	58	60	62	64	66	68

B&C COLLECTION  
**OUTER WEAR /UNIT**