

B&C HOODED SOFTSHELL /W. - JW 937

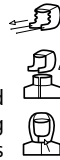
SOFTSHELL JACKET



Full zip opening with chin protector



Detachable balaclava hood with adjustable drawstring and trendy stoppers



Full inner placket in shell fabric



Cuffs with velcro closing tabs & embossed plastic pull



Raglan Sleeves

Easy access for decoration via inner left breast zip

Flat stitching for greater comfort

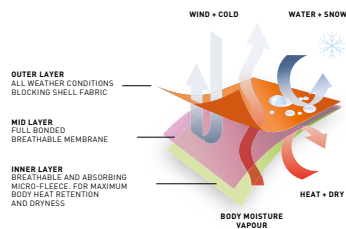
Perfect arm & elbow sleeve shape

Feminine cut

Adjustable bottom hem (with drawcord) Longer back



2 front side pockets with zips



High performance Softshell jacket

3-LAYER SOFTSHELL JACKET 340G/M²

Outer layer: 94% polyester - 6% elastane
Woven Softshell

Mid layer: bonded breathable membrane, windproof, waterproof

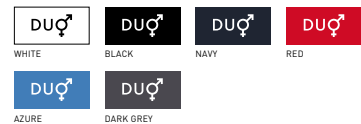
Inner layer: 100% polyester anti-pilling micro-fleece and 100% polyester mesh lining on front panels

Waterproof: 5000 mm

Breathable: 1000 MVP

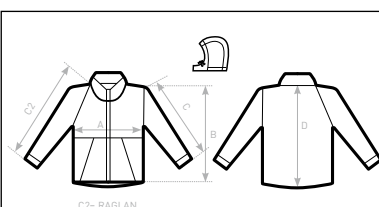
XS - S - M - L - XL - XXL

1 pc/pack & 10 pcs/carton



DUO
CONCEPT

with B&C Hooded Softshell /men



SIZES [CM]

B&C HOODED SOFTSHELL /W. JW 937

	XS	S	M	L	XL	XXL	XXXL
A HALF CHEST	44	46	48	50	52	54	-
B BODY LENGTH FROM NECK POINT	59	61	63	65	67	69	-
C2 SLEEVE LENGTH FROM NECK POINT FOLLOWING THE CURVE	67,5	69,5	71,5	73,5	75,5	77,5	-
D CENTER BACK LENGTH	62	64	66	68	70	72	-