

# B&C MULTI-ACTIVE /WOMEN - JW 826

## MIDDLE WEIGHT JACKET



**Middle weight multi-use jacket with comfortable fleece lining**

**POLYESTER 210T TAFFETA**

Outer layer: 100% polyester 210T taffeta

Body lining: 100% polyester anti-pilling micro-fleece

Sleeve lining: 100% polyester quilted taffeta

XS - S - M - L - XL - XXL

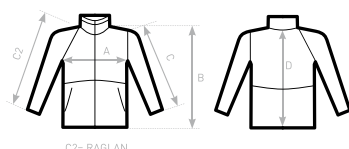
5 pcs/pack & 10 pcs/carton



- Showerproof
- Feminine cut
- Windproof
- ANTI PILLING Anti-pilling micro-fleece

- 1- Concealed hood
  - 2- Contrasted micro-fleece lining for extra warmth
  - 3- Standing collar, adjustable hem and cuffs for great protection
  - 4- PU Coating for better water protection and breathability
  - 5- Forward seam on shoulder for better comfort and waterproofness
  - 6- 2 zippered hand pockets with overlap
- Zip at lower back gives easy full decoration access (front - back - sleeves)
- Maximised decoration areas

Fabric tested for the following decoration techniques: screen printing, heat transfer, sublimation (for white only) and embroidery



**SIZES [CM]**

**B&C MULTI-ACTIVE /WOMEN JW826**

	XS	S	M	L	XL	XXL
A HALF CHEST	49	52	55	58	61	64
B BODY LENGTH FROM NECK POINT	69	71	73	75	77	79
C SLEEVE LENGTH	61	62	63	64	65	66
D CENTER BACK LENGTH	67	69	71	73	75	77

B&C  
COLLECTION  
**OUTER WEAR /UNIT**