



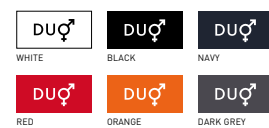


LIGHT WEIGHT JACKET
/ WITH LINING



Modern lined windbreaker

-  100% 210T polyester taffeta with acrylic coating (AC)
-  Body lining: 100% polyester tricot
Sleeves lining: 100% polyester taffeta
-  S - M - L - XL - XXL - XXXL
-  5 pcs/pack & 30 pcs/carton



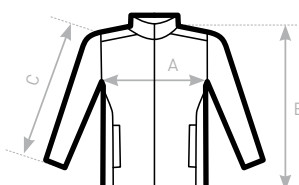
-  Windproof
-  Water-repellent
-  Showerproof
-  Thermoinsulated

- 1- Ergonomic hood concealed in collar with velcro closing tabs
- 2- Self fabric lining inside the collar
- 3- Forward seams on shoulders for better protection
- 4- Front zip opening with zip pull
- 5- Adjustable bottom hem with drawcord
- 6- 2 front pockets with overlap and 1 inner wallet pocket



DUO
CONCEPT

with B&C ID.601 /w.



SIZES [CM]

| B&C ID. 601 JU 160 | XS | S | M | L | XL | XXL | XXXL |
|---------------------|----|------|----|------|----|------|------|
| A HALF CHEST | - | 54 | 57 | 60 | 63 | 66 | 69 |
| B BODY LENGTH AT CB | - | 70 | 72 | 74 | 76 | 78 | 80 |
| C SLEEVE LENGTH | - | 63,5 | 65 | 66,5 | 68 | 69,5 | 71 |

B&C
COLLECTION
**OUTER
WEAR
/UNIT**