

# B&C DNM FRAME /MEN - JM D10



**MEDIUM FIT**

**DENIM trucker jacket**

- 100% DENIM cotton, garment wash
- Metallic buttons in antique brass
- Front folding with bartacks to reinforce DNM RAW look
- Two side pockets and one chest pocket with visible finish in reverse denim and bartack to simulate pen pocket
- Single button cuffs
- Specific elbow construction
- Decorative button on waistband at the back
- Contrast stitching



- Denim Twill, 100% cotton
- Garment wash
- Heavyweight denim (12 OZ)
- S - M - L - XL - XXL - XXXL
- 1 pc/pack & 20 pcs/carton



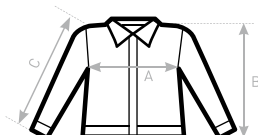
**TIPS & IDEAS**

- No lining - easy access for decoration



**B&C**  
COLLECTION  
**OUTER WEAR /UNIT**

**DUO**  
**CONCEPT**  
with B&C DNM Frame /women



**SIZES [CM]**

B&C DNM FRAME /M. JM D10	XS	S	M	L	XL	XXL	XXXL
A HALF CHEST	-	50	53	56	59	62	65
B CENTER BACK LENGTH	-	63	65	67	69	71	73
C SLEEVE LENGTH	-	65,5	67	68,5	70	71,5	73

