

# B&C TROOPER /MEN - JM 963

## LIGHT WEIGHT JACKET / WITH LINING



Trendy light weight bomber jacket with ergonomic concealed hood

**POLYESTER 210T TAFFETA**

Outer layer: 100% polyester 210T taffeta

Body lining: 100% polyester mesh

Sleeve lining: 100% polyester taffeta

S - M - L - XL - XXL - XXXL

5 pcs/pack & 30 pcs/carton

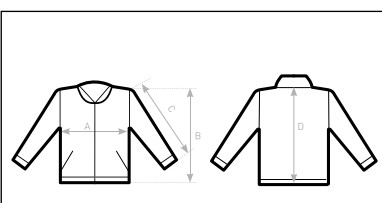


Showerproof Windproof

- 1- Fashionable contrasted diamond mesh lining, improves breathability and comfort
- 2- Self fabric inner collar
- 3- Contemporary cotton feel heavy rib on cuffs and bottom hem
- 4- Forward shoulder seams for better comfort and water protection
- 5- 2 zipped hand pockets
- 6- 1 inner wallet pocket with velcro closing tabs

Zip at lower back gives easy full decoration access (front - back - sleeves)

Fabric tested for the following decoration techniques - screen printing, heat transfer, sublimation (for white only), and embroidery



### SIZES [CM]

B&C TROOPER /MEN JM963	XS	S	M	L	XL	XXL	XXXL
A HALF CHEST	-	56	59	62	65	68	71
B BODY LENGTH FROM NECK POINT	-	68	70	72	74	76	78
C SLEEVE LENGTH	-	66,5	68	69,5	71	72,5	74
D CENTER BACK LENGTH	-	66,5	68,5	70,5	72,5	74,5	76,5

B&C  
COLLECTION  
**OUTER WEAR /UNIT**