

# B&C X-LITE SOFTSHELL /MEN - JM 951

## SOFTSHELL JACKET



Media player compatible: small opening for earphone cord in right chest pocket + hidden earphone loop on the collar



Chin protector



Right chest zipped pocket with reverse zip fastening, garage & zip pull

Full front reverse zip fastener with zip pull

Full inner placket in outer Softshell fabric + 2 inner pockets

Performance fit: ergonomic body shape articulated raglan sleeves



2 front zipped pockets

Adjustable bottom hem with elasticated drawcords and stoppers



Adjustable cuffs with rubber tab and velcro



## High performance 3-layer Softshell jacket - Light Pack jacket

**Outer layer:** 94% polyester - 6% elastane  
Woven Softshell (300 g/m<sup>2</sup> - total weight - all layers)

**Mid layer:** bonded breathable membrane, windproof, waterproof

**Inner layer:** 100% polyester mesh

**Waterproof:** 5000 mm

**Breathable:** 5000 MVP

S - M - L - XL - XXL - XXXL

1 pc/pack & 10 pcs/carton



- Windproof
- Water-repellent
- Waterproof
- 4-way stretch
- Thermo-insulated
- Critical seams taped
- Breathable



DUO CONCEPT

with B&C X-Lite Softshell /women

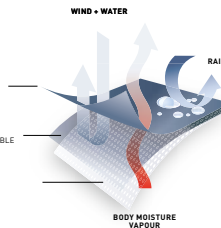
### B&C LIGHT PACK CONCEPT:



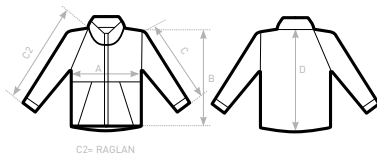
**OUTER LAYER**  
WOVEN WATER REPELLENT FABRIC (94% PES - 6% ELASTANE)

**MEMBRANE LAYER**  
BONDED WATERPROOF, WINDPROOF AND BREATHABLE MEMBRANE

**INNER LAYER**  
100% PES MESH LINING



### SIZES [CM]



B&C X-LITE SOFTSHELL /M. JM 951	XS	S	M	L	XL	XXL	XXXL
A HALF CHEST	-	52,8	55,8	58,8	62,8	66,8	70,8
B BODY LENGTH FROM NECK POINT	-	68,5	70	71,5	73	74,5	76
C2 SLEEVE LENGTH FROM NECK POINT	-	79	80,4	81,8	84	86,2	88,4
D CENTER BACK LENGTH	-	65,6	67,2	68,3	70,1	71,4	73,2

B&C  
COLLECTION  
**OUTER WEAR /UNIT**