

B&C COOLSTAR /WOMEN FW 752



ENGINEERED FLEECE



OUTER WEAR /UNIT

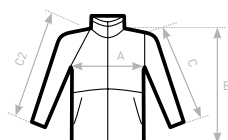
- Lightweight ergonomic full zip micro-fleece
- Maximum insulation for a minimum weight and compact design
- Double-side brushed for softness and featuring a supersoft, thermally efficient fleece
- Its light weight provides high flexibility to wear it as a jacket or as extra insulation layer, for outdoor or indoor
- Full front reverse zip fastener with zip pull
- Chin protector
- 2 front pockets with reverse zip fastening and zip pull
- Feminine cut
- Chest seams for waisted form
- Set-in sleeves
- Open hem and open cuffs
- Ergonomic arm and elbow sleeve shape for freedom of movement and comfort



- 100% anti-pilling polyester micro-fleece (144 filaments)
- 170 g/m²
- XS - S - M - L - XL - XXL
- 5 pcs/pack & 15 pcs/carton



DUO
CONCEPT
with B&C Coolstar /men



C2= RAGLAN SLEEVE

SIZES [CM]

| B&C COOLSTAR /WOMEN FW 752 | XS | S | M | L | XL | XXL | XXXL |
|----------------------------|------|------|------|------|------|------|------|
| A HALF CHEST | 43,5 | 46,5 | 49,5 | 52,5 | 56,5 | 60,5 | - |
| B BODY LENGTH | 62,5 | 63 | 64 | 66 | 67 | 69,5 | - |
| C SLEEVE LENGTH | 61 | 62 | 63 | 64 | 65,5 | 67 | - |

