

B&C ID.501 > FU 150



**OUTER
WEAR
/UNIT**

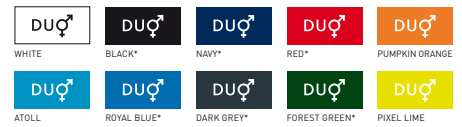
**BASIC
BY B&C**



MEDIUM FIT

The micro-fleece Basic by B&C

- Tone-on-tone full zip opening with zip pull
- Necktape
- 2 front pockets with zips and zip pulls
- Essential contemporary look
- Open hem



* COLOURS AVAILABLE IN XXXL

100% polyester anti-pilling micro-fleece

280 g/m²

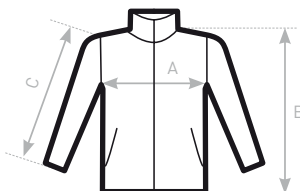
XS - S - M - L - XL - XXL - XXXL - 4XL *

5 pcs/pack & 15 pcs/carton

* ONLY AVAILABLE IN BLACK, NAVY, RED, ROYAL BLUE, DARK GREY AND FOREST GREEN



**DUO
CONCEPT**
with B&C ID. 501 /w.



SIZES [CM]

B&C ID.501 FU 150	XS	S	M	L	XL	XXL	XXXL	4XL
A HALF CHEST	50	53	56	59	62	65	68	71
B BODY LENGTH	66	67,5	69	70,5	72	73,5	75	76,5
C SLEEVE LENGTH	61	62,5	64	65,5	67	68,5	70	71,5

