

B&C ICEWALKER+ - FU 703

RAW FLEECE



B&C
COLLECTION

**OUTER
WEAR
/UNIT**

- Tone-on-tone full zip opening with zip pull
- 2 front pockets with zips
- Open hem with elasticated cord, 2 stoppers and easy-to-pull rings



BLACK*

NAVY*

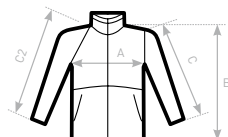
RED*

CHARCOAL

* COLOURS AVAILABLE IN XXXL

- 100% anti-pilling polyester fleece
- 300 g/m²
- XS - S - M - L - XL - XXL - XXXL*
- 5 pcs/pack & 15 pcs/carton

* ONLY AVAILABLE IN BLACK, NAVY AND RED



C2= RAGLAN SLEEVE

SIZES [CM]

| B&C ICEWALKER+ FU 703 | XS | S | M | L | XL | XXL | XXXL |
|-----------------------|------|------|------|------|------|------|------|
| A HALF CHEST | 50 | 53 | 56 | 59 | 62 | 65 | 68 |
| B BODY LENGTH | 68 | 69,5 | 71 | 72,5 | 74 | 75,5 | 77 |
| C SLEEVE LENGTH | 61,5 | 62,5 | 63,5 | 64,5 | 65,5 | 66,5 | 67,5 |

FAIR
WEAR
FOUNDATION